

# Product Info

## "Kvaser Memorator light"

(Manufacturer: Kvaser AB)



The **Kvaser Memorator Light** is a preconfigured data logger designed for ease of use. Using an autobaud function to determine the CAN bus bit rate, the Kvaser Memorator Light can be attached to any high-speed CAN bus without configuration. The device will log all CAN bus traffic in a circular buffer, overwriting the oldest data when the buffer becomes full. The device also keeps track of Error Frame conditions and the message traffic that occurs near the conditions in a separate circular buffer. The built-in memory prevents data corruption from SD card mishandling and connector damage. The included software extracts the recorded data through the USB 2.0 interface.

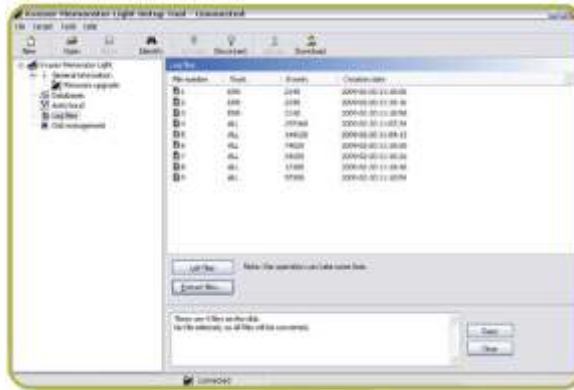
### Features

- Single high-speed CAN channel (compliant with ISO 11898-2).
- Supports both 11-bit (CAN 2.0A) and 29-bit (CAN 2.0B active) identifiers.
- Supports bit rates from 10 Kbit/sec up to 1 Mbit/sec.
- Auto detects bit rate – removes the need for configuration.
- Always in silent mode – log bus traffic without interfering.
- 1 GByte of internal memory for message storage.
- All received CAN frames are recorded in a circular buffer – oldest data is overwritten with the newest.
- A second circular buffer records 1000 messages before and after an error frame occurrence.



## Kvaser Memorator Light Extraction Software

The Kvaser Memorator Light extraction software provides easy access to the recorded data when connected to the device via a USB port. The tool supports multiple file formats used by popular analysis software. In addition, the extraction software allows the user to clear and reinitialize the device's memory.



## More Features

- CAN frames are time stamped with a 2 microsecond resolution.
- Standard male 9 pin DSUB CAN connector.
- Device status indicated using 4 externally visible LEDs - Power, CAN, Error Frame, and Error.
- Error indication of Auto baud failure, storage error.
- Rechargeable battery ensures all data is recorded when the system shuts down.
- USB 2.0 High Speed interface for extracting the recorded data at 1.4 MByte/sec.

## Application Support

- ATI Apollo™
- ATI CANlab™
- ATI Vision™
- Vector CANalyzer™
- Vector CANoe™
- Warwick X-Analyzer™
- Xtm™

## Supported OS

- Windows 7/Vista/XP/2000™
- Windows Server 2003™

Kvaser Memorator Light	
USB interface	2.0 High Speed
CAN interface	Male 9 pin DSUB
Number of CAN channels	1
Temperature range	-40°C to 85°C
Supports bit rates	up to 1 Mbit/s Yes
CAN 2.0 A and 2.0 B (active)	Yes
Operating voltage	CAN bus (6 – 40 V DC)
Power consumption	600 mW
Time stamp	accuracy 2 µs
LED indicators	4
Weight	160 g
Dimensions approx.	46 x 115 x 22 mm
ISO 11898-2	Yes
Silent mode	Yes
Polyurethane cabling	Yes